

KÄRCHER

makes a difference

WRE 18-55 WRE 18-55 Battery Set



Deutsch	6
English	10
Français	14
Italiano	18
Nederlands	22
Español	26
Português	31
Dansk	35
Norsk	39
Svenska	43
Suomi	47
Ελληνικά	51
Türkçe	55
Русский	59
Magyar	64
Čeština	68
Slovenščina	72
Polski	76
Românește	80
Slovenčina	84
Hrvatski	88
Српски	92
Български	96
Eesti	101
Latviešu	105
Lietuviškai	109
Українська	113
Қазақша	117
日本語	122
العربية	126

EAC



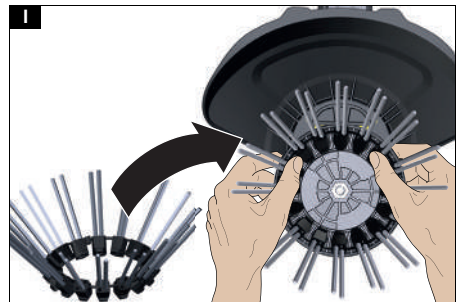
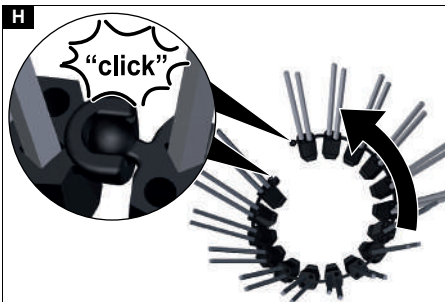
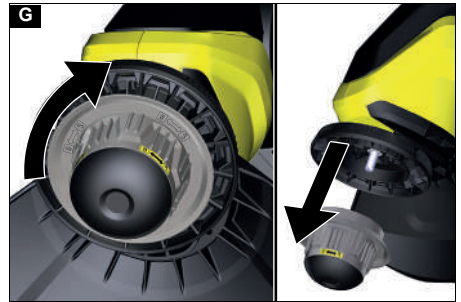
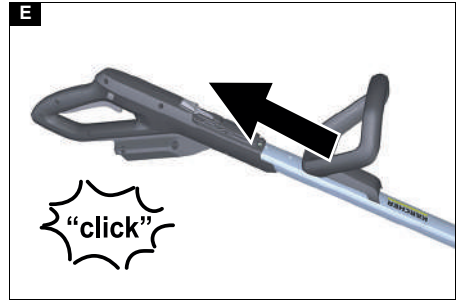
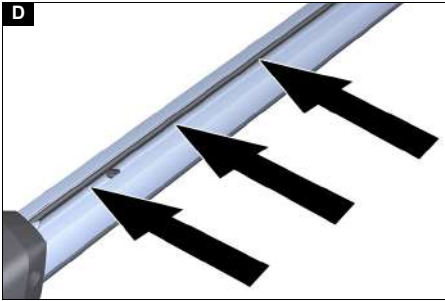
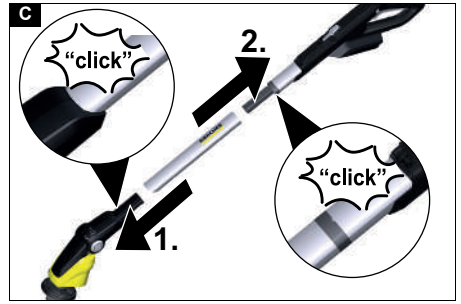
Register
your product

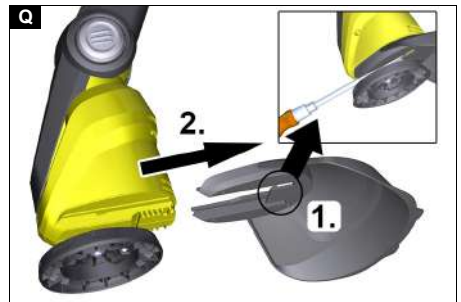
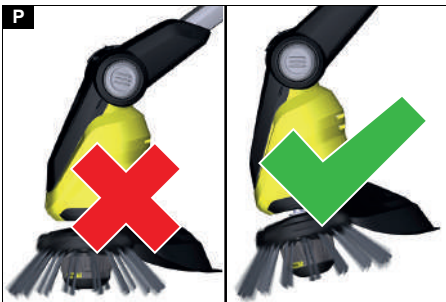
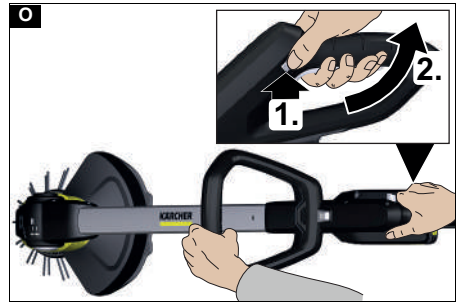
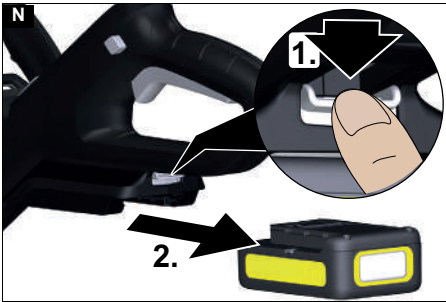
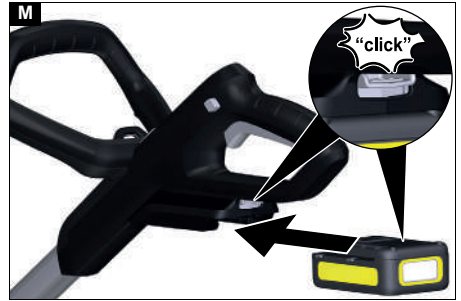
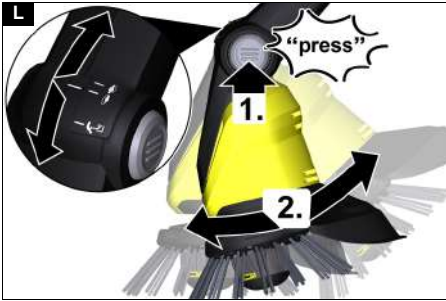
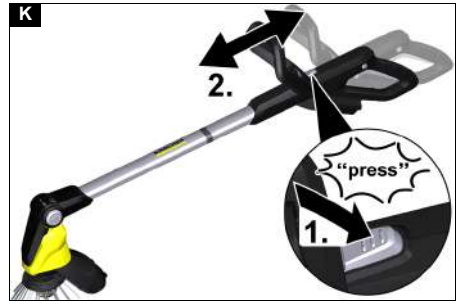
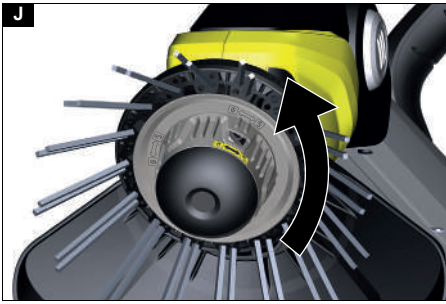
www.kaercher.com/welcome

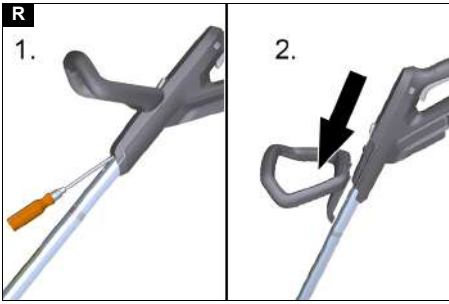
59691950 (01/21)

A











Dokumentationsbevollmächtigter:

S. Reiser
Alfred Kärcher SE & Co. KG
Alfred-Kärcher-Str. 28 - 40
71364 Winnenden (Germany)
Tel.: +49 7195 14-0
Fax: +49 7195 14-2212
Winnenden, 2020/01/01

Contents

General notes	10
Safety instructions	10
Battery pack/charger	10
Intended use	10
Environmental protection	10
Accessories and spare parts	10
Scope of delivery	10
Safety devices	11
Symbols on the device	11
Description of the device	11
Assembly	11
Initial startup	11
Operation	12
Transport	12
Storage	12
Care and service	12
Troubleshooting guide	13
Warranty	13
Technical data	13
EU Declaration of Conformity	13

General notes

  Read the original instructions before using the device for the first time and act in accordance with it. Keep the original instructions for future reference or for future owners.

Safety instructions

General safety instructions

⚠ DANGER • Risk of asphyxiation. Keep packaging film out of the reach of children.

⚠ WARNING • Persons with reduced physical, sensory or mental capabilities and persons lacking experience and knowledge may only use the appliance if they are properly supervised, have been instructed on use of the appliance safely by a person responsible for their safety, and understand the resultant hazards involved. • Children must not operate the device. • Children must be supervised to prevent them from playing with the appliance. **Note** • Do not operate the device when other persons or animals are in the work area.

Safety instructions

- Never fully immerse the device in liquids.
- Only operate the device outdoors.
- Regularly check the device for damage. Do not operate the device if you discover visible damage.

- Ensure that the surface to be cleaned is free of sand, stones or loose elements before starting work. These can be flung away during cleaning or damage the surface and the device.
- Be aware of the recoil of the device during operation. The device can move back and forth uncontrollably when switched on. Hold the device securely and maintain a solid and safe footing.
- Do not operate the device in the vicinity of devices that are connected to electrical power.
- Observe the safety instructions provided with the battery pack.

Battery pack/charger

Read and adhere to the operating instructions and safety instructions for handling the battery and charger.

Intended use

⚠ WARNING

Risk of injury from flung particles

Use the weed remover only with an intact protective hood.

The device is intended for superficial removal of moss and weeds from joints and various surfaces including composite stones, washed concrete slabs, and tiles.

Only use the device in private households.

The telescoping handle and pivoting cleaning head can be adjusted to suit different body heights.

Foreseeable misuse

Any type of improper use is prohibited.

The operating personnel are liable for damage resulting from incorrect use.

Environmental protection



The packing materials can be recycled. Please dispose of packaging in accordance with the environmental regulations.



Electrical and electronic appliances contain valuable, recyclable materials and often components such as batteries, rechargeable batteries or oil, which - if handled or disposed of incorrectly - can pose a potential threat to human health and the environment. However, these components are required for the correct operation of the appliance. Appliances marked by this symbol are not allowed to be disposed of together with the household rubbish.

Notes on the content materials (REACH)

Current information on content materials can be found at: www.kaercher.com/REACH

Accessories and spare parts

Only use original accessories and original spare parts. They ensure that the appliance will run fault-free and safely.

Information on accessories and spare parts can be found at www.kaercher.com.

Scope of delivery

The scope of delivery for the appliance is shown on the packaging. Check the contents for completeness when unpacking. If any accessories are missing or in the event of any shipping damage, please notify your dealer.

Safety devices

Brush protective cover

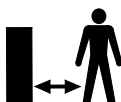
Illustration B

The protective cover prevents the operator or persons in the vicinity from being injured by flung particles.

Symbols on the device



Warning of flying objects.



Keep other persons away from the work area.



Wear suitable hearing protection and safety goggles when operating the device.



Protect the device from rain and spray water.



For users up to 177 cm tall.



For users taller than 178 cm.



For use under objects (e.g. benches).



Direction of rotation for opening the bristle strip locking cover.



Direction of rotation for closing the bristle strip locking cover.

Description of the device

See graphics page for illustrations

Illustration A

- 1 Rotating nylon brush
- 2 Pivoting cleaning head
- 3 Pivoting cleaning head unlocking button
- 4 Telescoping handle
- 5 Second handle
- 6 Telescoping handle unlocking button
- 7 Trigger lockout button
- 8 Handle
- 9 Trigger
- 10 Mount for 18 V Battery Power battery pack
- 11 Battery pack unlocking button
- 12 Type plate

- 13 Brush protective cover
- 14 Guide aid with bristle strip locking cover

Assembly

1. Push the pipe provided with the chamfered side into the motor housing.
The pipe latches audibly into place.

ATTENTION

Risk of damage

The handle is pre-installed and set to the shortest telescopic length. Do not change the setting until the telescopic handle is completely installed.

2. Insert the upper tube section into the mount on the handle until it audibly latches into place.

Illustration C

3. Fit the power cable into the cable duct in the telescoping handle from the bottom to the top.

Illustration D

4. Push the second handle into the mount until it audibly latches into place.

Illustration E

5. Push the protective cover into the mount until it audibly latches into place.

Illustration F

6. Screw open the handle lock of the bristle strip holder in a clockwise direction and remove it.

Illustration G

7. Join the bristle strip into a crown by snapping the ball into the recess.

Illustration H

8. Place the bristle crown into the holder.

Illustration I

9. Put on the guide aid including the bristle strip locking cover and screw closed in an anti-clockwise direction.

Illustration J

Initial startup

Adjusting the device

Adjusting the telescoping handle

You can adjust the length of the device to suit your requirements.

1. Press the unlocking button.
2. Adjust the telescoping handle as desired.

Illustration K

Adjusting the cleaning head

You can adjust the angle of the cleaning head to suit your requirements. The device has the following setting options:



For users up to 177 cm tall.



For users taller than 178 cm.



For use under objects (e.g. benches).

1. Press the cleaning head unlocking button.
2. Adjust the cleaning head.

Illustration L

Inserting the battery pack

ATTENTION

Dirty contacts

Damage to the device and battery

Check the battery mount and the contacts for soiling and clean them as necessary before inserting the battery.

Illustration M

1. Push the battery into the mounting in the device until it audibly latches into place.

Removing the battery

⚠ WARNING

Uncontrolled startup

Risk of injury

Remove the battery pack from the device during work breaks and before carrying out any service or care work.

Illustration N

1. Press the unlocking button.
2. Remove the battery from the device.

Operation

Switching on the device

You must press the unlocking button to enable the trigger (safety function). Only then can the device be switched on via the trigger.

1. Press the trigger lockout button.

Illustration O

2. Press the trigger at the same time.

The device starts up.

3. Release the trigger lockout button.

The device continues running.

4. Release the trigger.

The device stops.

Removing weeds

Note

Please note that the device only removes weeds at the surface. It does not remove the roots.

Note

We recommend using the device only in a horizontal, slightly angled position. Vertical use can result in faster wear of the bristle strip.

The gentle nylon brush is capable of removing a wide range of weed types from and between almost any hard surface. The cleaning results can however vary depending on external influences (ambient humidity, ground moisture and ambient temperature).

ATTENTION

Risk of damage

Do not scrub with the device or use the protective cover for scraping. This may damage the device

1. Always guide the device with slow movements over the surface to be cleaned, at a slight angle without applying any pressure. Do not guide the device flat over the surface.

Illustration P

2. Work on stubborn weeds multiple times slowly.
3. Hold the device at the side of the second handle when cleaning joints so that it is slightly tilted. Please note that loose material in the joint may also be removed.

Transport

⚠ CAUTION

Failure to observe the weight

Risk of injury and damage

Be aware of the weight of the device during transportation.

Storage

⚠ CAUTION

Failure to observe the weight

Risk of injury and damage

Be aware of the weight of the device during storage.

Correct storage of the device

Store the device by hanging from the eye in the handle. You can also alternatively place the device on the edge of the protective cover.

ATTENTION

Risk of damage to the bristles

Do not store the device standing on the bristles.

Care and service

Changing the bristle strip

Note

The bristle strip must be replaced when the bristles show signs of wear.

1. Remove the battery pack from the device.
2. Screw open the handle lock of the bristle strip holder in a clockwise direction and remove it.

Illustration G

3. Pull out worn out bristle strip and the removal aid.

4. Join the new bristle strip into a crown by snapping the ball into the recess.

Illustration H

5. Place the bristle crown into the holder.

Illustration I

6. Put on the guide aid including the bristle strip locking cover and screw closed in an anti-clockwise direction.

Illustration J

Replacing the protective cover

⚠ WARNING

Risk of injury from flung particles

Use the weed remover only with an intact protective hood.

The protective cover must be replaced when it shows signs of wear such as cracks or fractures.

1. Remove bristle strip.
2. Release the lock on the protective cover with a flat-blade screwdriver.

Illustration Q

3. Pull the protective cover away to the rear.

4. Attach the new protective cover and snap it into place; see chapter *Assembly*.

Cleaning

The battery pack must be removed from the device before cleaning.

ATTENTION

Improper cleaning

Damage to the device

Do not clean the device with a hose or high-pressure water jet.

Do not use aggressive detergents.

Do not knock the brush on the ground.

1. Remove the battery pack.
2. Remove the plant residue using a brush.
3. Clean the device with a moist cloth.

Removing the second handle

Illustration R

The second handle can be removed for repair purposes.

1. Release the lock on the second handle with a flat-blade screwdriver.
2. Pull the second handle downwards and out of the holder.

Take care to ensure that the second handle engages on re-installation.

Troubleshooting guide

Malfunctions often have simple causes that you can remedy yourself using the following overview. When in doubt, or in the case of malfunctions not mentioned here, please contact your authorised Customer Service. As the battery pack ages, even if it is looked after, its capacity reduces such that the full run time will no longer be reached when fully charged. This does not indicate a defect.

The device does not start up

The battery pack is not inserted correctly.

1. Push the battery pack into the mounting in the device until it audibly latches into place.

The battery pack is discharged.

1. Charge the battery pack.

The battery pack is in sleep mode.

1. Press and hold the power switch longer or press the power switch a second time.

The battery pack is defective.

1. Replace the battery pack.
- Bristle strip blocked/device overloaded/motor protection has triggered.

1. Allow the device to cool down for a few minutes.
2. Press less hard when operating the device

The device stops during operation

The battery has overheated

- Stop working and allow the battery to cool down to the permissible temperature range. This can take a few minutes.

Unsatisfactory cleaning results

Worn bristles

- Replace the bristle strip.

Bristle strip locking cover including guide aid cannot be opened

Soiling

1. Remove the battery pack.
2. Insert a flat screwdriver into the guide aid recess.

Illustration S

3. Using the screwdriver as a lever, turn the brush protective cover in the direction of the "lock open" symbol.

Warranty

The warranty conditions issued by our relevant sales company apply in all countries. We shall remedy possible malfunctions on your appliance within the warranty period free of cost, provided that a material or manufacturing defect is the cause. In a warranty case, please contact your dealer (with the purchase receipt) or the next authorised customer service site. (See overleaf for the address)

Technical data

	WRE 18 -55	WRE 18 - 55 Batterie Set
Device performance data		
Battery pack type	-	Battery Power 18/25
Working voltage of the battery	V 18	18
Brush speed	1/min 2300-2800	2300-2800
Brush diameter	mm 180	180
Brush material	Nylon	Nylon
Dimensions and weights		
Weight	kg 2,8	3,3
Length x width x height	mm 1370 x 230 x 380	1370 x 230 x 380
Determined values		
Hand-arm vibration value	m/s ² 3,2	3,2
Uncertainty K	m/s ² 0,5	0,5
Sound pressure level	dB(A) 71	71
Uncertainty K _{pA}	dB(A) 2	2
Sound power level L _{WA} + K uncertainty _{WA}	dB(A) 87	87

Subject to technical modifications.

EU Declaration of Conformity

We hereby declare that the machine described below complies with the relevant basic safety and health requirements in the EU Directives, both in its basic design and construction as well as in the version placed in circulation by us. This declaration is invalidated by any changes made to the machine that are not approved by us.

Product: Weed remover
Type: WRE18-55 Battery

Currently applicable EU Directives

2006/42/EC (+2009/127/EC)
2014/30/EU
2011/65/EU
2000/14/EC

Harmonised standards used

EN 60335-1
EN 62233: 2008
EN 55014-1: 2006+A2: 2011
EN 55014-2
EN 50581

Conformity evaluation procedure used

2000/14/EC: Annex V

Sound power level dB(A)

Measured: 83
Guaranteed: 87

The undersigned act on behalf and under the power of attorney of the company management.



THANK YOU!
MERCI! DANKE! ¡GRACIAS!



Registrieren Sie Ihr Produkt und profitieren Sie von vielen Vorteilen.

Register your product and benefit from many advantages.

Enregistrez votre produit et bénéficiez de nombreux avantages.

Registre su producto y aproveche de muchas ventajas.

www.kaercher.com/welcome



Bewerten Sie Ihr Produkt und sagen Sie uns Ihre Meinung.

Rate your product and tell us your opinion.

Évaluer votre produit et dites-nous votre opinion.

Reseñe su producto y díganos su opinión.



www.kaercher.com/dealersearch

Alfred Kärcher SE & Co. KG
Alfred-Kärcher-Str. 28-40
71364 Winnenden (Germany)
Tel.: +49 7195 14-0
Fax: +49 7195 14-2212

